

Major Triads in Groups (bass clef)

No sharps or flats

C Major



F Major

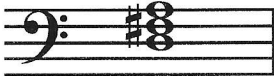


G Major



Sharp in the middle

D Major



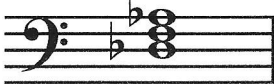
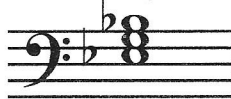
E Major



A Major



Flats on the bottom and top notes

D \flat MajorE \flat MajorA \flat Major

Flat on bottom only

B \flat Major

All sharps

C# Major



F# Major



Sharps on third and fifth

B Major



All flats

C \flat MajorG \flat Major